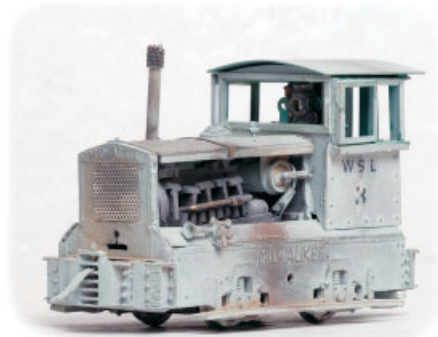


HONORABLE MENTION



Left. FINESCALE RAILROADER contributor **Mallory Hope Ferrell**, from Peachtree City, Georgia built an accurate On3 model of the West Side Lumber Company's Milwaukee 0-4-0. Number 3 has a re-gauged HO scale Pacific Fast Mail power truck, a replica of the diesel engine beneath the hood, and an operating headlight.



Right. Les Davis, from McLean, Virginia, submitted three On30 models. The first merges the chassis from an old HO scale AHM GE 35 tonner with the superstructure of an HO scale Life-Like flatcar load to create an open and well used backwoods lokey.



Les modified the frame of a 1:43 scale truck to accept a Northwest Shortline Flea II mechanism and Bachmann Porter trailing trucks as the lead trucks. He then fastened the truck model's cab and hood to a scratchbuilt bed.

The final model also uses the chassis from an AHM GE 35 tonner. Les scratchbuilt the frame and deck, added an extended Boulder Valley cab, and scratchbuilt the hood and radiator cowl.



Left center. Scott Buschlen, from Brampton, Ontario, Canada scratchbuilt everything on his Gn15 critter but the gas tank (from an old Porsche model). The drive from a Bachmann On30 trolley. The superstructure is styrene and the roof copper. Scott created the outstanding finish with paint, rottenstone, and Testors Dullcote. The prototype was a two foot gauge Brookville, worked a peat bog near Niagara Falls, and still exists.

The Gn15 Kent combines the hood, radiator, and engine from a Ford panel van with the mechanism from a shortened Bachmann On30 trolley. Most of the model is plastic; the floor and seat are wood. The lower part is primer grey, the top flat black. The weathering is rottenstone, chalks, and paint.



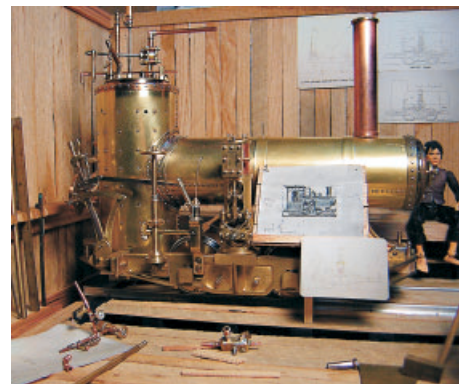
Left. Chuck Haverlah, from Thousand Oaks, California scratchbuilt 1:8 (1.5 inches equal one foot) and 1:32 scale switchers. Everything on his 7 1/2 inch gauge 25 ton Plymouth is scratchbuilt except the couplers and Timken bearing covers. He built the superstructure from wood and aluminum angle, the motor and gearbox are from an electric golf cart, and a 12 volt car battery provides power. The model features radio control operation, a sound system, an LED headlight from a small flashlight, and weighs about 90 pounds.

Chuck's 25 ton Plymouth has a battery powered, radio controlled USA motor block, toy truck sound system, and mechanically rotating orange LED on the cab roof.

The 1:32 scale MDC Hustler has moveable window shades. Chuck modified the N scale Kato center cab locomotive by cutting the body into more than half a dozen parts before reassembly.



Below. Today Montgomery, from Mountain View, Arkansas, writes, "I have not been a modeler but **FINESCALE RAILROADER** got me involved so I have spent the last hundred days, plus some, building a shop, some tools, tables, and my very first locomotive, a 7/8n2 John F. Byers, from recycled brass, copper, bronze, steel, and some commercial brass shapes. It is entirely handmade." He adds, "My wife and I live deep in the woods; it's been a nice six months since anyone came by to visit." Fortunately, Today has a computer and an Internet connection; now all of us can appreciate his work.



HONORABLE MENTION

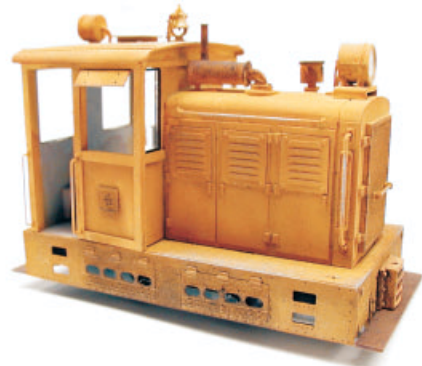


Left. Rick Schintzler, from Hamilton, New Jersey, started with an undecorated On30 Bachmann Davenport, detailed it with a Backwoods Miniatures dress up kit, and sprayed it with Krylon Ruddy Brown primer. Then he applied a combination of table salt and rubber cement and brush painted the engine with washes of Cream-Coat Leprechaun acrylic paint. When the paint was dry, Rick removed the salt and rubber cement to allow the rust primer to show through, added rust streaks with chalks, and applied a few thin washes of raw umber to make it look dirty. He also added wooden footboards.



Above. Jerry Lawrence, from San Juan Capistrano, California, scratchbuilt an On30 version of Tom Yorke's Gn15 *Gnute* to fit a shortened and narrowed Bachmann Davenport chassis minus the counterweights. The superstructure is styrene with a few parts from a Grandt Line mine engine.

Below. Jerry combined a Davenport chassis with a Backwoods Miniatures kit to create an On30 boxcab and, with another Backwoods Miniatures dress up kit, a handsome little critter.



Hubert Wetekamp, from Werl, Germany submitted several models. *Trudi*, **top right**, is 1:45 scale, proper for European meter gauge and represents a Swiss prototype. Hubert built it from prototype drawings, photos, and his own measurements from styrene, Grandt nut-bolt-washers, Fleischmann wheelsets, commercial headlight, air hose and coupler pocket castings, and a Faulhaber motor.

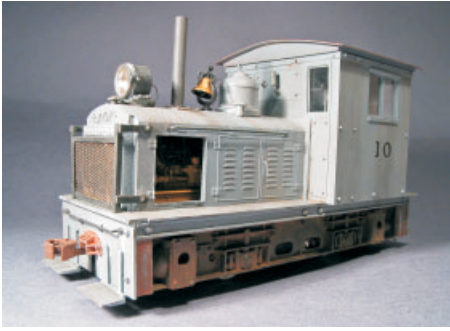
His second critter, **right**, is a 3 inch scale version of an RGS Speeder he built from Grandt Line drawings. Its gauge can change from 7.25 (Europe and eastern U.S.) to 7.5 inches (western U.S.). It is completely scratchbuilt from steel tubing, shapes, and sheet. Hubert had to drill every hole for the 850 rivets. Power is from a 3.5 horsepower, one cylinder Briggs & Stratton engine powering a 24 volt, 35 amp alternator and then a 400 to 600 watt 24 Volt d.c. motor.

Lower right. The red diesel engine, V30, follows a Deutz prototype. It is "On39³/₈" (1:45 scale) and completely scratchbuilt from published plans and Hubert's own measurements. It has a hand cut styrene superstructure (no strip). Commercial parts include a Faulhaber motor, HO scale axle bearings, and cast brass headlight, windshield wipers, brake hoses, coupler pockets, coupler, the front handrails, and handrail stanchions, and Grandt Line nut-bolt-washers. The engine also features a complete interior.

The 3/8n20 diesel **below** began as a Fleischmann On30 model. Hubert removed the cab and steps, widened the frame, attached a new sheet styrene shell, built a grille from sheet brass, then fabricated a cab from very thin plywood and Northeastern stripwood. Commercial parts include the buffers, bell, headlights, and the cab details. It features a Faulhaber motor and Selectrix decoder.



HONORABLE MENTION



Above. Allen K. Littlefield, from New Paltz, New York, has submitted a trio of On30 models: The gray "Plymouth" and the yellow "Vulcan" and "GE 25 ton" locomotives are freelance but closely follow their prototypes. The Plymouth and Vulcan have Boulder Valley Models cast resin cabs; Allen modified a Railway Design Associates resin casting for the GE cab. Two mechanisms are from Model Power HO diesels, one from an On30 Bachmann trolley. Allen will describe construction of all three in our December 2005 issue.



Above. Steve Pettit, from Sydney, Australia, built an On3 switcher about three years ago for the famous Red Stag Lumber Company layout. The mechanism is from a custom Steam Era Models "Black Beetle". Steve scratchbuilt the cab, hood, body, and frame from styrene; the stanchions and handrails are brass wire; and the pilot beams are scribed wood. He also scratchbuilt an On3 railtruck. The mechanism consists of a Bachmann motor, Grandt Line universals, a Northwest Shortline drive, and an N scale voltage decoder. The chassis is brass H section; the cab and hood are styrene, brass, and aluminum; the bed is distressed stripwood. Steve "peeled" the paint with the rubber cement technique; weathered the model with pastel chalks, paints, and Rustall; and loaded the bed with commercial detail castings.



Left. Dave Richey, from Glenwood Springs, Colorado, modified a 1:29 scale Aristo-Craft Li'l Critter into a more credible standard gauge model. He retained the original motor block, horn, sideframes, and battery box, built up a styrene superstructure, added wooden end beams, and peppered the loco with Ozark Miniatures and Trackage Details castings. The headlight and some onboard clutter are from Bachmann, the bell from Accucraft, and the remaining parts from the scrapbox. Dave pirated the sound system from a toy truck.

Below and right. Mark Lundquist, from Pleasant Ridge, Michigan, modified an MDC switcher more closely to match a photograph of a very early prototype with roof mounted tanks. He added diamond plate to all foot surfaces, a radiator shield, extra window framing, glazing, handrails along the hood, piping, and a detailed the cab interior, all scratchbuilt from styrene and brass. The battery operated headlights have turned down Mag-Lite® lenses and bulbs. The model is Krylon industrial green and heavily weathered with hand painted rust and airbrushed dust; the decals are homemade.





Far left. Our friend **Guy Tyteca**, from Chapelle-à-Wattines, Belgium, has an eclectic assortment of critters. He built a 1:20.3 scale Whitcomb from an old AMB kit. **FINESCALE RAILROADER** subscriber **Patrick Marcet** painted, detailed, and weathered the model.

The second loco, **lower far left**, is from a large scale MDC kit. Guy writes, "This engine, a poor runner, always stays somewhere on the line, sort of derelict; steam is much more efficient. Again, Patrick Marcet, my French best logging friend, detailed and weathered it."

Guy's "better half", **Cathy "Ma Dalton" Bertet**, built and owns the HO_N30 Joe Works Sakai critter, "a typical mining workhorse" (**above left**). Guy writes, "Ma Dalton also built a typical French HO scale Gecomodel meter gauge critter. She prototypically adapted it from a small steam locomotive chassis."

Uncle Russ' former high school teacher, **Dan Markham**, now living in Redding, California, built a couple of credible critters (**far right, above and center**), then seems utterly to have lost his senses.

Dan fabricated Switcher Number 8 from wood, powered it with a Bachmann trolley mechanism, and detailed it with commercial castings. So far, so good.

He scaled up Switcher Number 5 from an HO scale Plymouth, fabricated the entire model from wood, and powered it with a Barry's Big Trains mechanism. It, too, is an impressive effort but, at that point, stress seems to have affected poor Dan and things go quickly downhill.

It seems best to let you draw your own conclusions from the remaining photos. The models involve a variety of unorthodox materials and techniques, perhaps befitting their character. It is only fair to point out that Dan once cut quite a dashing figure both physically and mentally. Therapy has been successful, though, and his doctors expect a full recovery.



George Landon, from Saint Petersburg, Florida, completely scratchbuilt two On30 mining critters on commercial streetcar mechanisms, **left**. He provides no further information preferring to let the photos do the speaking.



Carl Wagner, from Northglenn, Colorado, took his wife to Chama, New Mexico. She liked the appearance of a small crew car they found there so he scratchbuilt an On30 model from styrene sheet, tube, angle, and channel. The grab irons and gas tank straps are brass wire. The mechanism is from a Bachmann trolley.

Dave Funk, from Bath, Pennsylvania, writes, "On3 Critter Number 40 (near right) could be the oldest in your contest; I scratchbuilt it in 1978! Back then little was available. I regauged an HO scale MDC boxcab mechanism and added a can motor. The hood was a plastic container; I built up the cab and deck from sheet styrene. Details are from Grandt Line and others.

"Critter Number 4 represents my attempt to enlarge a 1:22.5 scale LGB model to 1:20.3. I added marker lights, the air horn, a larger headlight, raised the coupler, repainted the model, and lettered it with decals. I kept the weathering light."



Below. Fred Smith, from Eugene, Oregon, built On30 Center Cab Number 3 in the early 1960s following a series in *Railroad Model Craftsman*. The body is wood, the details are brass, the couplers are from Kadee®, and Fred says the model still runs pretty well.

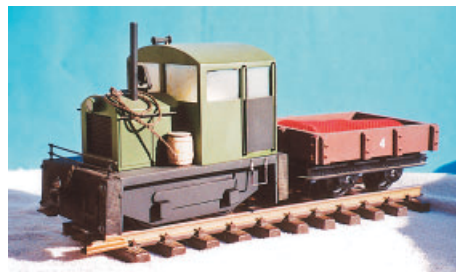


Scott Chartier, from Wray, Colorado, based a pair of nominally 1:20.3 scale railtrucks on the Rio Grande Southern's Galloping Geese. Each has Northwest Shortline power trucks. Goose Number 4 has the cab and hood from a die cast 1931 Ford truck, Ozark Miniatures castings, Hartford Products archbar trucks with 24 scale inch diameter wheelsets, and scratchbuilt truck bed, pilot, and details.

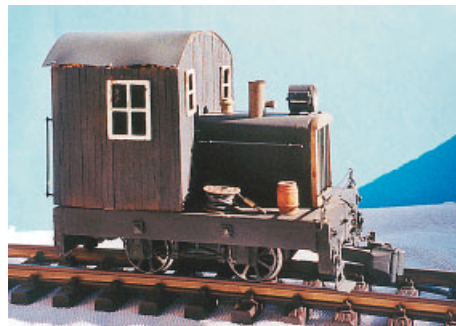
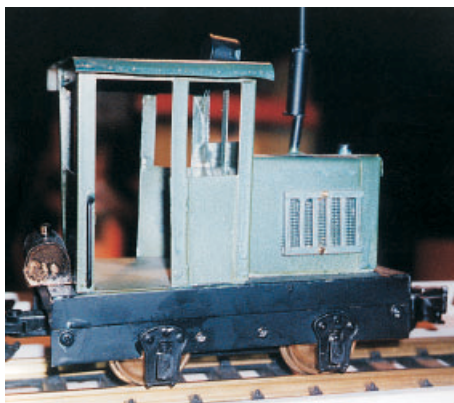
Scott's Goose Number 9 began as a die cast 1931 Peerless automobile. He cut away the rear, built up a freight section from wood and sheet metal, and installed 600 straight pins (each 4 millimeters long) as rivets. Scott says, "That was fun! Then I made door latches from brass strip, added Ozark details, set the model on Hartford trucks, and articulated the model between the cab and trailer so it would negotiate sharp curves."



Left. Carlo Spirito, from Old Orchard Beach, Maine closely approximated a Deutz OMZ 122F locomotive in 7/8n2. He scratchbuilt a styrene superstructure on an LGB chassis, then installed a radio control system, sound module, and rechargeable NiCad battery. The deck, end beams, removable hood (including the characteristic drilled side doors), radiator, and exhaust stack are scratchbuilt or heavily modified. The cab detail is complete inside and out. Carlo even sculpted the figure and faithfully reproduced the builder's plate and numeral 7 on the cab side.



Below. James Freeman, from Runnemede, New Jersey, scratchbuilt his 1:22.5 scale engine from brass. He installed an MDC mechanism, operating headlight, and Aristo-Craft couplers.



Above. Fred Banks, from Burbank, California, has sent photos for most or all of our Challenges. His green locomotive dates back several years and now runs on battery power. Fred scratchbuilt the gray critter. It has a basswood frame, coffee stir sticks make up the cab, the radiator grill is from window screen, and the wheels and motor came from an old powered handcar. Both models are large scale.



Lee Cobb, from North Eastham, Massachusetts, photographed his 7.25 inch gauge, 1:8 scale critter fresh from the paint shop prior to the addition of lettering, handrails, and final installation of the control box. The frame and superstructure are from Railroad Supply; the axle mounted motors and electronics are from Cannonball, Ltd. Lee adds, "Not as fancy as Mallory Hope Ferrell's units but then the detail would be knocked off by the adults and kids riding the train. Fun, fun, fun!"



Longtime reader **Jerry Leeds**, from Lindenwold, New Jersey, started with a 1:24 scale Hartland switcher, performed some "drastic plastic surgery, added a lot of detail parts from Ozark Miniatures along with various pieces of junk", and now operates the Mack railtruck on his Moss Mill Railroad. Jerry adds, "I'm converting another Mack switcher to a railbus, which I hope will be the focus of your next Challenge." Sorry, Jerry, the next Challenge will be to build a lineside factory or warehouse.



Craig Zehner, from Union, New Jersey, combined an MDC Li'l Hustler kit with a 1:18 scale die cast 1934 Ford to create a 1:20.3 scale switcher. Craig enlarged the stock cab, replaced the MDC hood and radiator with those from the Ford, added Ozark Miniatures and handmade details, used hydraulic oil filters from a Meyers snowplow pump as exhaust spark arresters, and added enough weight to enable the model to haul a heavy train up a 5-percent grade.



Left. Leonard Markstrom, from South Haven, Michigan, created a large scale critter from a thin plywood deck, plastic sideframes from the scrapbox, a Kalamazoo mechanism and spoked wheel centers, an LGB motor, Ozark Miniatures journals, and brass Delton tender steps. Leonard covered a block of wood with thin copper and formed the side air vents with a chisel. He built up the radiator from styrene and copper screen, soldered up the gas tank from brass, and cut up and corrugated an aluminum soda can to make the roof. The loco has directional lighting and will haul half a dozen freight cars on level track.



Above. Mick Moignard, from Bucks in the U.K., scratchbuilt an HO N3 RGS covered speeder from brass following drawings from a Grandt Line On3 kit. The model rides on a modified and re-gauged Arnold N scale chassis. Mick installed Grandt Line handcar wheel centers, new axles, a Mashima motor, DCC, and operating lights.

Right. Dave Powell, from Algoma, Iowa built Rio Frito Number 9 as in On30 on a Bachmann HO cable car mechanism. He scratchbuilt the superstructure and painted it for his Costa Rica Banana Tram.



Below. Pete Watson, from Niagara Falls, Canada modified a 1:20.3 scale Accucraft Trains Whitcomb switcher by installing Kadee® couplers; Ozark Miniatures air hoses, bell, gas tank, pipe fittings, and flow valve; Bachmann tools; rusty chain; and a hand painted figure. Pete scratchbuilt the coupler lift bars, muffler, exhaust pipe with functioning rain cap, and front and rear windshield wipers. He completed the model with lettering, safety striping, and weathering.



Left. Ferdinand Mels, from Oakville, Ontario, Canada based his scratchbuilt 7/8n2 model on a Ruston 7 horsepower gas mechanical. He started with a USA Trains motor block, fabricated most of the superstructure from styrene, created patterns, and cast some details from urethane resin. Ferdinand mounted the wheelsets in sealed stainless steel bearings on the axle housings.





Above. Hans Hammarsten, from Västerås, Sweden scratchbuilt a 1:24 scale Diema DL6 locomotive to operate on HO (nominally 15 inch) gauge track. The primary material is styrene, the coil springs are from a ballpoint pen, the mechanism is from a Halling truck. It is Hans' first attempt at scratchbuilding.



Above. David Cummings, from Warne, North Carolina, modified a 7/8n2 brass Plymouth by Sierra Valley by replacing all cardstock components with sheet brass, adding pilot steps, coupler cut bars to the rear pilot, and Accucraft knuckle couplers. Dave then detailed the motor to represent a diesel using brass scraps, soft wire, pipe cleaners he soaked in paint to represent radiator hoses, and plastic parts he removed from an Aristo-Craft prime mover. He painted the critter with Krylon and weathered it with Polly Scale colors. The engineer now holds a scale beer can.



Above. Forrest Van Schwartz, from Madison, Wisconsin, liked the appearance of the Oregon-American Lumber Company's homemade Speeder Number 10. He began with a large scale Model Die Casting critter, extended the running board width, added footboards to the pilot, significantly rebuilt the cab with modified 1:48 scale Grandt Line doors and windows, fully detailed the cab interior, and attached castings from Trackside Details, Hartford Products, Ozark Miniatures, USA Trains, Italeri, and others. The superstructure is styrene and the model's scale is 1:20.3.



laminating birch sideboards and pilots. The roof is 400 grit wet-dry sandpaper. Bryan turned it upside down and applied masking tape over it, then finished the model with Badger paints and modeling powders.

Left. Bryan Tichota, from Woodland, California, built a logging critter on Bachmann's On30 Davenport chassis. The inspiration was a Dunkirk 0-4-0 Grasshopper. The boiler is a 3/4-inch diameter copper fitting with a 0.010-inch thick styrene wrapper. The boiler details are HO scale and the functioning firebox door from Precision Scale. The water tank is scratchbuilt; it has Grandt Line rivets and a wire hose. The sides are HO scale 4 by 6 stripwood with



Above. Paul Stump, from Berryton, Kansas, based his 7/8n2 CritterFox Farm Light Rail Number 3 on a Jim Massfeller kit. It is all brass except for the cast resin radiator, end beams, and sand boxes. Detail parts are from Sulphur Springs, Talisman, and homemade. Barry's Big Trains supplied the mechanism; battery power radio control operates the model.



Below. Bert Horner, from Thuringerberg, Austria, created a 1936 Hunslet diesel from "a badly abused LGB diesel that looked like it had fallen out of a 20th story window". He scratchbuilt the superstructure from brass, installed a die cast Paxman diesel engine, and glazed the windows with microscope slides. The cab interior is 0.8 millimeter thick maple veneer, the radiator is stainless steel mesh, and the cab doors function. Bert adds, "As the engine works at a steel plant, it has no lights except the bulb in the cab. I purposely left the sides off the hood to show the engine, air filter, generator, cooling fan, and radiator. The model is incomplete but I wanted to submit a photo by the Challenge deadline."



Right. The redoubtable "Uncle Russ" Reinberg, from Westlake Village, California, spent 13 years helping to complete a 1:1 scale critter. The internal combustion 0-4-0, *Mister Pounceford*, operates randomly on his 1:20.3, 1:32, 1:48, and 1:87 scale layouts. A relative scratchbuilt the headlights, grill, curb feelers, and audio receptors. Note the realistic, well maintained finish. The unit includes integral sound and exhaust systems and operates on both naturally occurring and commercially available fuel.



Above. Gene Smith, from Warren, Ohio, modified an old LGB European diesel switcher into a 1:20.3 scale freelance American locomotive. He stripped the superstructure and added a bell, stack, headlight, handrails, and couplers. The horns are modified golf tees.



Left and above. Alan Carroll, from Andover, Massachusetts, posed two 1:48 scale narrow gauge locomotives beside a O standard gauge BL-2. The On30 engine has an HO scale Athearn SW1500 drive and frame and a pair of back-to-back Bachmann On30 Davenport cabs and hoods. The tiny On18 critter combines an N scale Life-Like drive, the frame from an HO scale Athearn Hustler, and the narrowed cab and hood from a Bachmann Davenport.

Right. Lu Zander, from Georgetown, Ontario, Canada scratchbuilt a Gn15 tram loco from freelance plans by Carl Arendt and details found from other battery locomotives. Lu fabricated the superstructure from sheet styrene and brass rod, purchased commercial rivets, nut-washer castings, chain, and hinges, but made everything else by hand. The mechanism is from an HO scale Bachmann GE 70 ton switcher. The young female engineer is a modified Preiser figure.

Below. Dave Wingrove, from Rochester, New York scratchbuilt a freelance critter on an older HO scale Bachmann 44 ton power truck. The headlight is from PSC; the bell and engineer figure are from Grandt Line. **(Top left.)**

Dave scratchbuilt the On30 Vulcan 12 ton on an HO scale Lifelike "Tea Kettle" steam locomotive chassis, then added a Grandt bell and PSC air tanks. **(Top right.)**

His On30 Plymouth began as an HO scale Model Power DDT; Dave scratchbuilt the cab. **(Bottom left.)**

And his On30 center cab began as an old HO scale IHC loco. Dave scratchbuilt the cab, installed Grandt side windows, and HO scale Tichy Train Group front and rear windshields. The bell is from PSC. **(Bottom right.)**



Below. Rob Gorski, from Ashley, Pennsylvania, built a freelance large scale critter from an MDC Big Hustler. He built new pilots and detailed the cab interior, installed an engine from a bulldozer model, relocated the headlight, replaced the bell with one he modified from another loco, and added Ozark Miniatures detail parts. Rob painted and weathered the model with an airbrush.





Gerald Styles, from El Paso, Texas, built three interesting locos. The first is a scratchbuilt large scale upright boiler logging engine. Gerald writes, "I freelanced the small steamer to give it the feel of the *Baltimore & Ohio Cricket*. The frame and deck are distressed basswood. The boiler, water tank, and roof are hand riveted sheet styrene. The drive train comprises a can

motor, NWSL gearbox and wheels, and Delrin chain and gears. The mechanism driving the steam cylinder arms is from a cheap electric toy car. The hardware and details are from Ozark Miniatures, the stack from LGB, and the gauges are brass tube and rod with faces I photographed from actual components, reduced, and printed with a computer."

The Mack railtruck is 1:24 scale Monogram plastic model with an inexpensive 12 volt can motor, all-wheel electrical pickup, a Northwest Shortline gearbox on the front axle, sound, and homemade constant lighting. The trucks have USA Trains archbar sideframes and NWSL wheelsets. A Delrin chain drive and gears transfer power to the second axle.



Gerald's final submission is an On30 freelance Dunkirk-Climax combination. The mechanism is a modified HO scale Athearn SW7 switcher with a smaller NWSL double-shaft motor. The entire superstructure is scratchbuilt from stripwood. The siding is hand scribed and distressed. The "tarpaper" roofing material is very fine sandpaper. The hardware and details are from PSC and Grandt but Gerald scratchbuilt the water tank and boiler from styrene. The stack and headlight are MDC HO parts and the couplers are Kadee®.

Below. Larry Patch, from Overland Park, Kansas, has built seven On30 critters over the past three years. Center Cab Number 4, **bottom center**, consists of a pair of HO scale Athearn Hustler hoods on an HO scale Proto 2000 SW switcher mechanism. The styrene cab and deck are scratchbuilt, the headlights are brass tube with MV lenses.

Larry no longer remembers what mechanism he used under the rusty white locomotive, **center right**, but the hood was from an HO scale model and he built everything else from styrene.

The little Brookville, **center left**, follows a prototype from the Blue Ridge Talc Company in Virginia. It employs an unidentified HO scale chassis and mechanism; Larry scratchbuilt the superstructure.

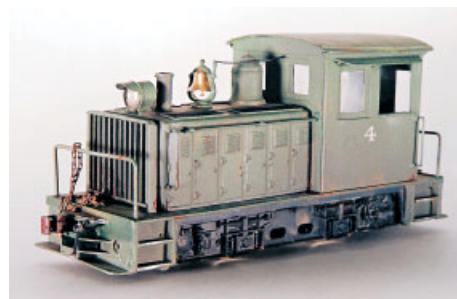
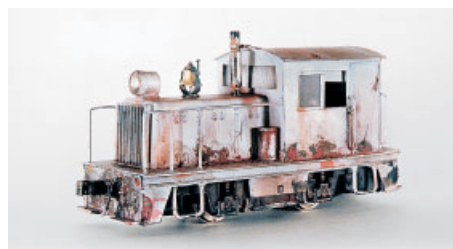


The green critter, **bottom left**, has the frame and mechanism from a Proto 2000 Alco switcher, a scratchbuilt styrene superstructure, and headlights and exhaust stack from brass tubing.

Plymouth Number 4, **bottom right**, began as an HO scale Model Power Plymouth. Larry pirated the hood from another HO scale model, the dome and bell from Grandt Line parts, and scratchbuilt the rest from styrene.

Center Cab Number 9, **top left**, combines an HO scale Bachmann 44 ton center cab chassis and mechanism, a Boulder Valley Models superstructure, and headlights from a 1:43 scale die cast automobile.

Larry's final model, **top right**, has an HO scale Model Power Plymouth mechanism and hood, scratchbuilt styrene cab and accessories, the headlight from a 1:43 scale auto, and brass tube exhaust stack.





Above left and right. Ed Culkosky, from Ontario, California, built a pair of On30 critters. *Mut* operates on an HO scale Bachmann GE 44 ton power truck; borrows its engine, figure, and headlight from a 1:25 scale Revell Model A pickup truck; and features a scratchbuilt (brass, aluminum, styrene, and wire) superstructure.

Ed's second model, *Spud*, takes its name from the Pacific Fast Mail mechanism powering its rear axle. The superstructure is a Matchbox Series 1930 Mack tank truck, the boom from an AHC derrick car, the pilot from the scrapbox, the figure from Campbell, and the headlights from a 1:25 scale Revell automobile kit. Ed scratchbuilt most of what remains.



Left and right. Norb Lundberg, from Des Plaines, Illinois, built two almost microscopic N scale locomotives, both from Bachmann 0-4-0 Shifters. The diesel retains nothing but Bachmann's chassis, gears, and drivers; Norb heavily modified the chassis, installed a new



motor, scratchbuilt a styrene superstructure, and even glazed the windows. The only commercial parts are the couplers, bell, and headlight lenses.

The Forney steam locomotive includes a new bell, headlight, steam dome, and generator, mostly scratchbuilt styrene cab and tender, and Sagami motor and flywheel. The modified Micro-Trains® trailing truck required some careful engineering for operation on tight curves. The coal is real. Norb made creative use of motor windings and very small diameter brass wire for the piping, cords, lift bars, and handrails on both models.

PORTLAND, MAINE: SEPTEMBER 2002
RUSS REINBERG PHOTO

